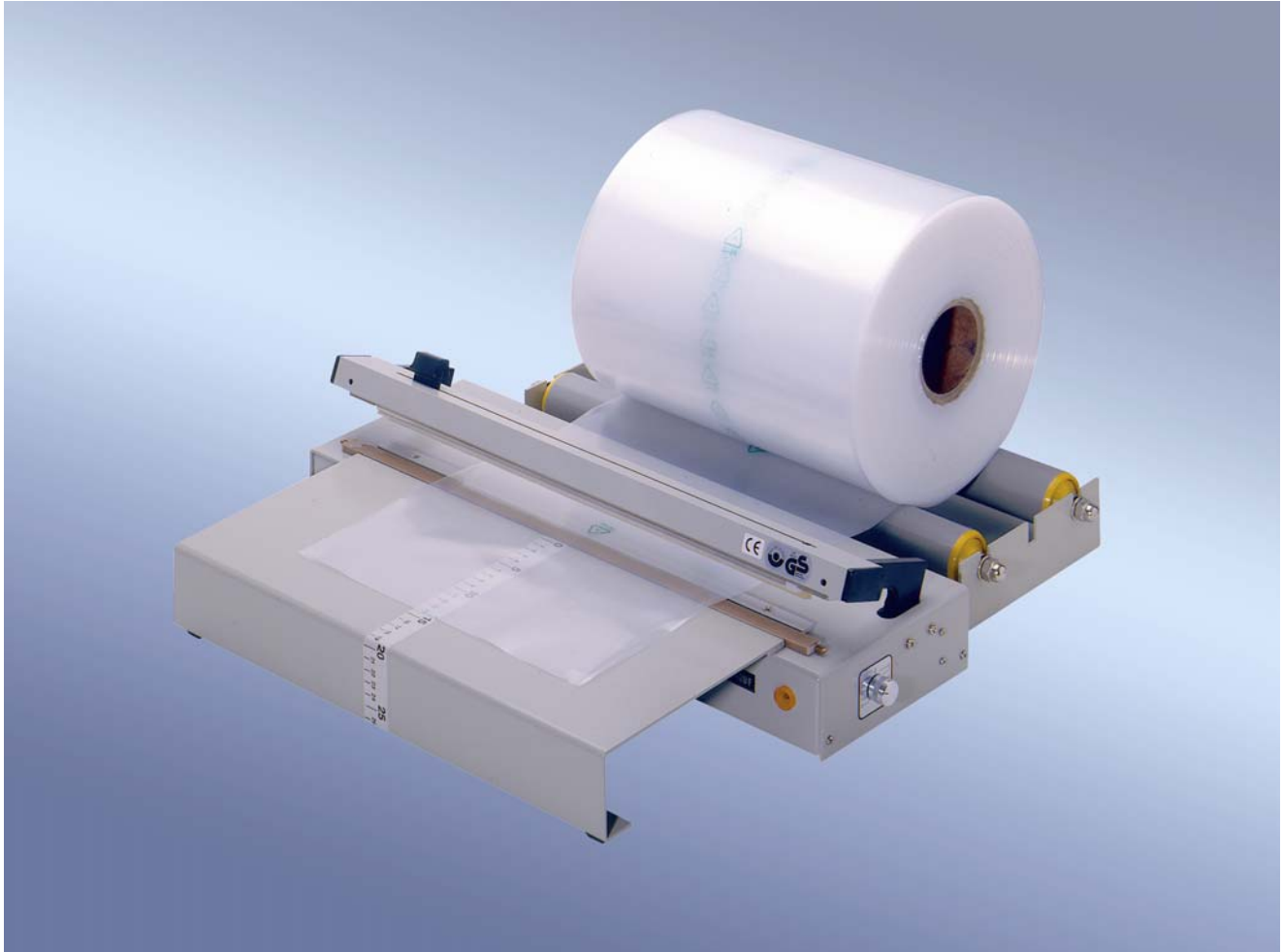


F / FSV

Table-top Sealers
Foot operation (with chain and foot pedal)



polystar® 420 FSV with table and unwinder



230 FSV with table



420 FSV with floor stand



230 FSV with magazine + table

www.polystar-hamburg.de
eMail: info@polystar-hamburg.de

What goes together can be sealed together.



Application:

Whether being used in the work-shop or in a spare parts store ... everything that cannot be riveted or nailed can be packed so that it is air and water tight; screws, bearings, electrical material, pipes and clichés ... Simply plug the **polystar**[®] table-top sealer into a 230 V AC socket and you are ready to start. You do not require any extra training time - sealing can be so easy! These sealers are suitable for sealing of, e.g. polyethylene film up to 2 x 0,25 mm thickness.

Operation:

The reliable thermal impulse principle and the optical monitoring aid – via a yellow control light – guarantees optimum sealing results. **polystar**[®] table-top sealers of series F/FSV are single heated. After switch on these table-top sealers are ready for work, at once. Just place the plastic film onto sealing bar and pull the lever by foot pedal in its down position. Thus, the pre-selected welding time will be released automatically.

polystar[®] sealers are manufactured in accordance with the terms of “GS” and “CE”.

Cutting device:

polystar[®] 230 FSV, 420 FSV and 580 FSV are equipped with built-in manually operating cutter for manufacturing pouches according to individual requirements by using thermoplastic film in rolls.

The operation of cutting can be done during the sealing process.

Special equipment:

The **polystar**[®] plastics film sealer with the addition of a plug-in table, a cutter and unwinder or magazine will quickly become your indispensable helper.



Technical Data:

polystar [®]	230 F*/FSV**	420 F*/FSV**	580 F*/FSV**
Seal length, max.	250 mm	440 mm	600 mm
Seal width	1,5 mm	1,5 mm	1,5 mm
Opening	40 mm	40 mm	40 mm
Current input	0,5 A	1,1 A	1,5 A
Power consumption	0,1 kWh	0,22 kWh	0,33kWh
Measurements	390 x 180 x 150 mm	580 x 180 x 150 mm	740 x 180 x 150 mm
Net weight	5,8 kg	8,6 kg	10,4 kg
Mains supply	230 V/50 Hz	230 V/50 Hz	230 V/50 Hz
<i>F* = without cutter FSV** = with cutter</i>			
All machines are supplied with a 3 m connecting cable. The measurements and weights given are approximate. We retain the right to make technical changes without giving prior notice! (C 2007/05)			